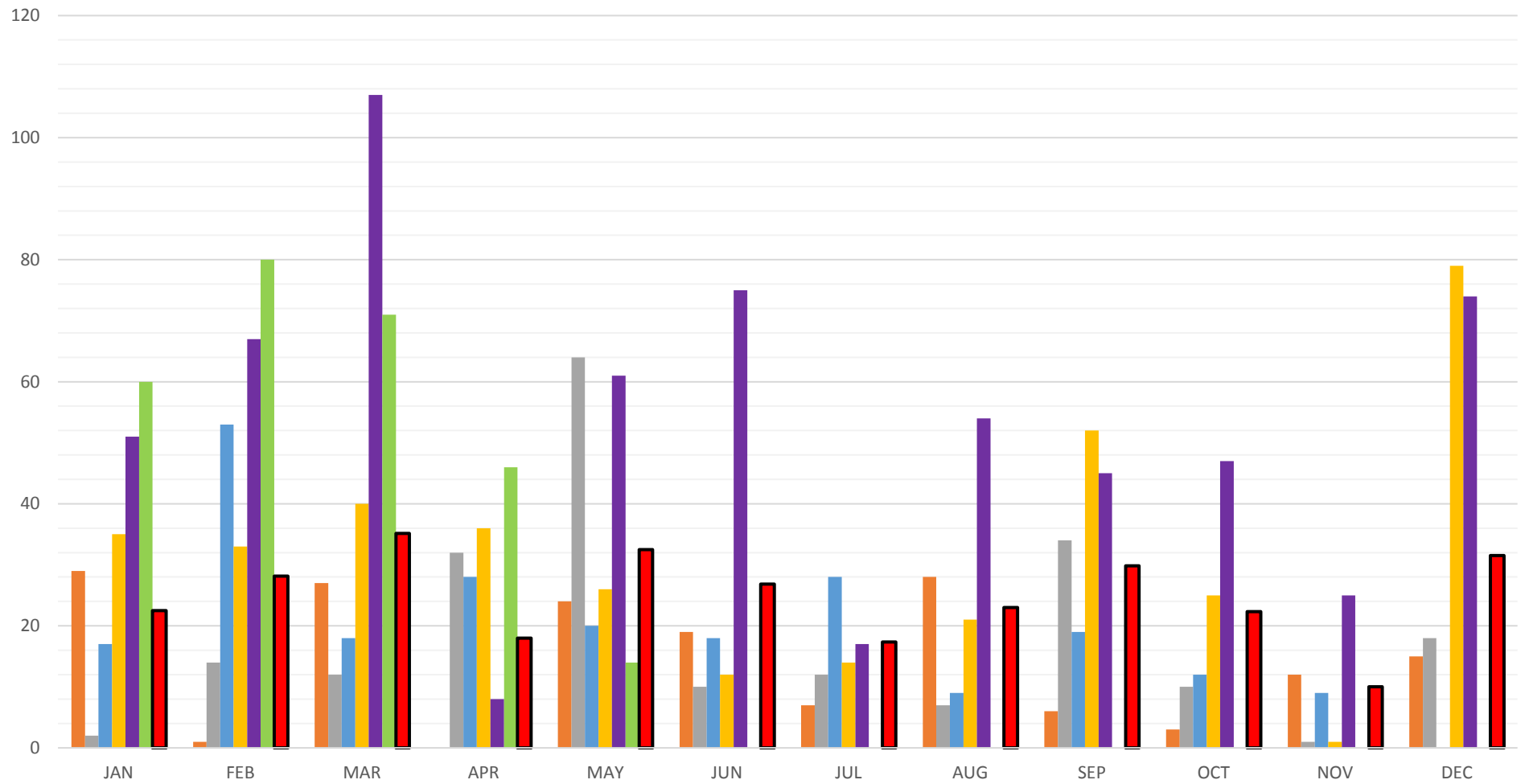


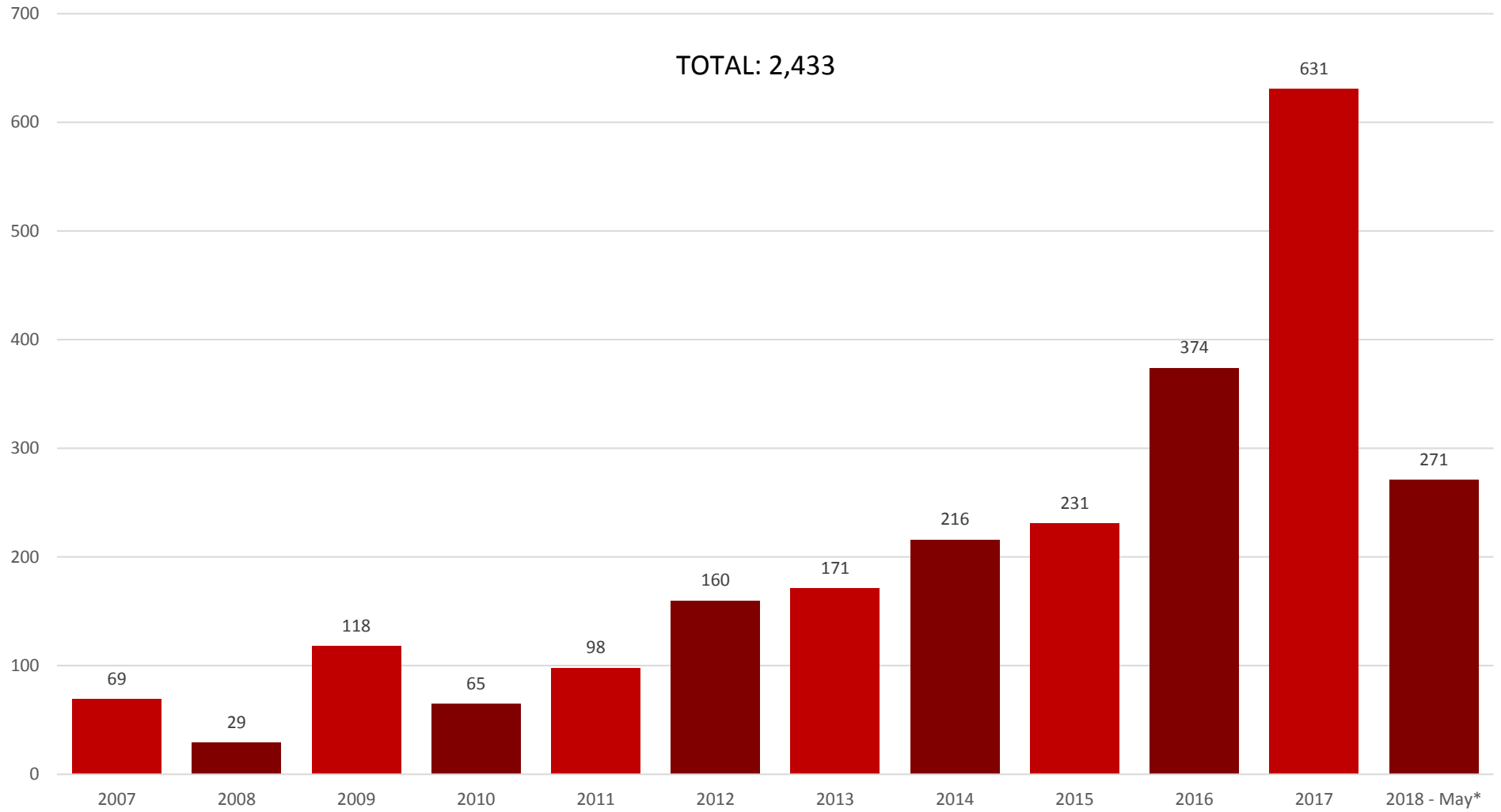
New Home Permits by Month

2013 2014 2015 2016 2017 2018 2012 - 2017 Average



New Home Permits Issued by Calendar Year 2007 - 2018

TOTAL: 2,433



2012 - 2017	AVG RBDs
JAN	23
FEB	28
MAR	35
APR	18
MAY	33
JUN	27
JUL	17
AUG	23
SEP	30
OCT	22
NOV	10
DEC	32

2012	RBDs
JAN	1
FEB	1
MAR	7
APR	4
MAY	0
JUN	27
JUL	26
AUG	19
SEP	23
OCT	37
NOV	12
DEC	3
TOTAL	160

2013	RBDs
JAN	29
FEB	1
MAR	27
APR	0
MAY	24
JUN	19
JUL	7
AUG	28
SEP	6
OCT	3
NOV	12
DEC	15
TOTAL	171

2014	RBDs
JAN	2
FEB	14
MAR	12
APR	32
MAY	64
JUN	10
JUL	12
AUG	7
SEP	34
OCT	10
NOV	1
DEC	18
TOTAL	216

2015	RBDs
JAN	17
FEB	53
MAR	18
APR	28
MAY	20
JUN	18
JUL	28
AUG	9
SEP	19
OCT	12
NOV	9
DEC	0
TOTAL	231

2016	RBDs
JAN	35
FEB	33
MAR	40
APR	36
MAY	26
JUN	12
JUL	14
AUG	21
SEP	52
OCT	25
NOV	1
DEC	79
TOTAL	374

2017	RBDs
JAN	51
FEB	67
MAR	107
APR	8
MAY	61
JUN	75
JUL	17
AUG	54
SEP	45
OCT	47
NOV	25
DEC	74
TOTAL	631

2018	RBDs
JAN	60
FEB	80
MAR	71
APR	46
MAY	14
JUN	
JUL	
AUG	
SEP	
OCT	
NOV	
DEC	
TOTAL	271