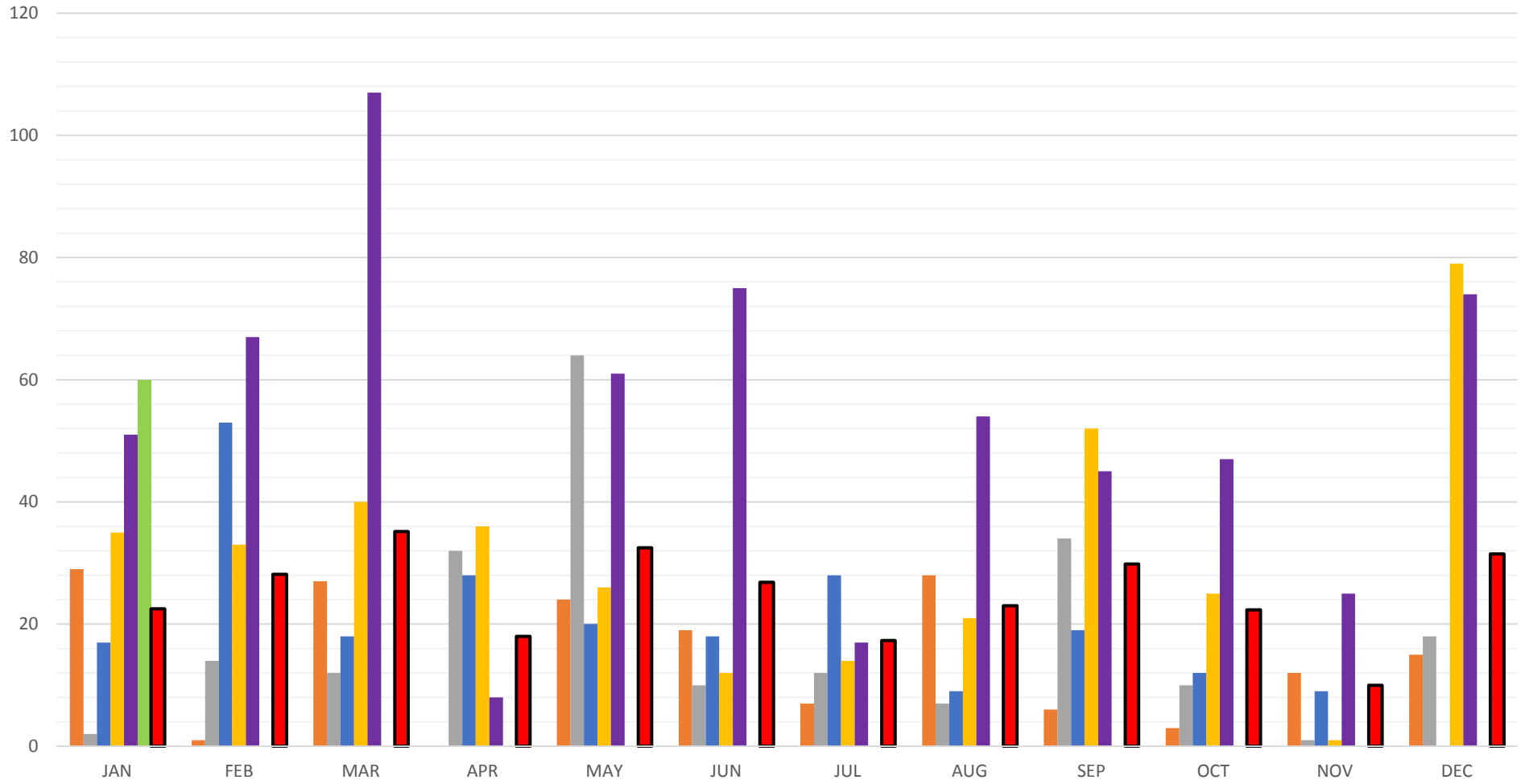


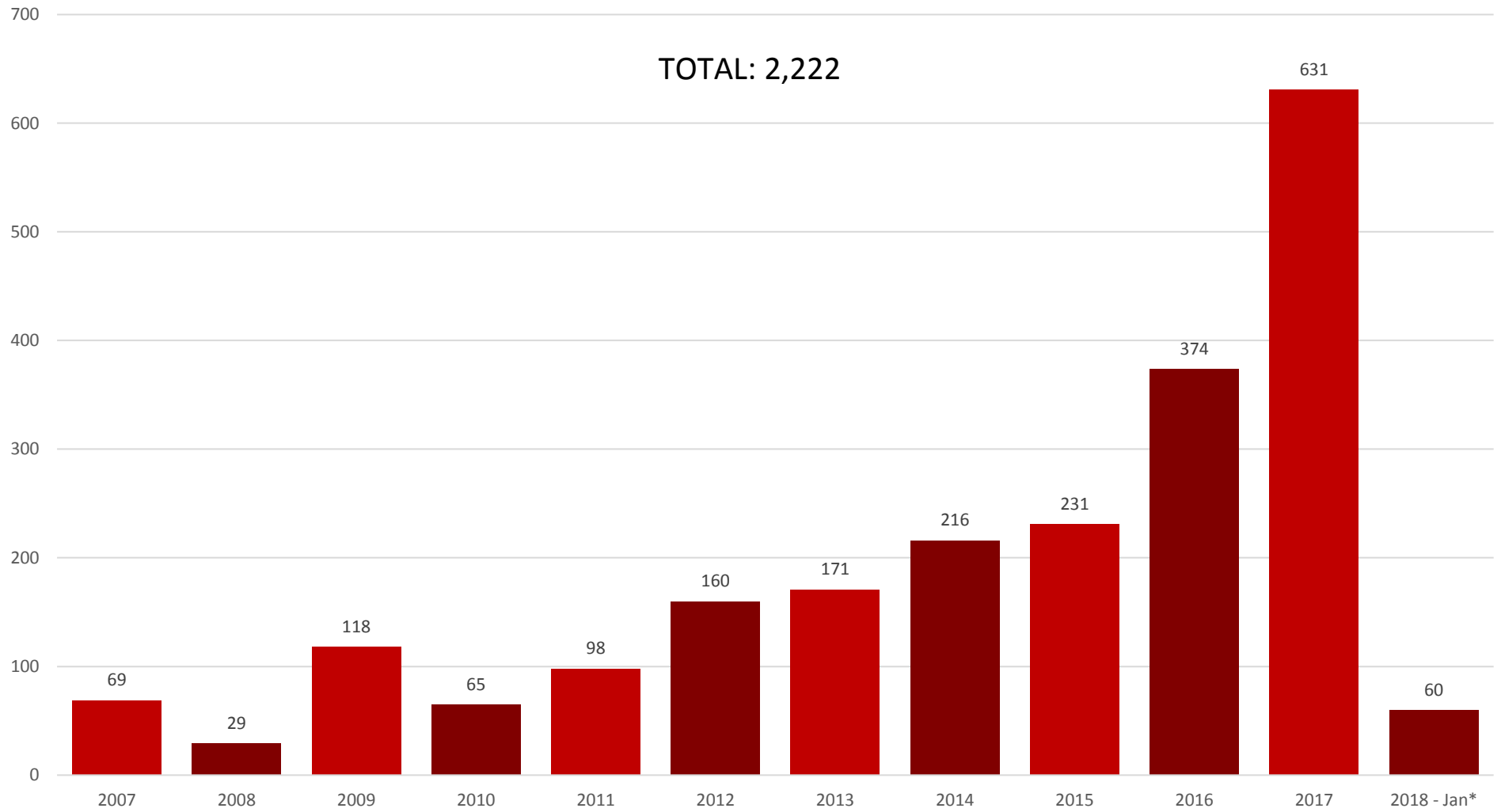
New Home Permits by Month

2013 2014 2015 2016 2017 2018 2012 - 2017 Average



New Home Permits Issued by Calendar Year 2007 - 2018

TOTAL: 2,222



| 2012 - 2017 | AVG RBDs |
|-------------|----------|
| JAN | 23 |
| FEB | 28 |
| MAR | 35 |
| APR | 18 |
| MAY | 33 |
| JUN | 27 |
| JUL | 17 |
| AUG | 23 |
| SEP | 30 |
| OCT | 22 |
| NOV | 10 |
| DEC | 32 |

| 2012 | RBDs |
|-------|------|
| JAN | 1 |
| FEB | 1 |
| MAR | 7 |
| APR | 4 |
| MAY | 0 |
| JUN | 27 |
| JUL | 26 |
| AUG | 19 |
| SEP | 23 |
| OCT | 37 |
| NOV | 12 |
| DEC | 3 |
| TOTAL | 160 |

| 2013 | RBDs |
|-------|------|
| JAN | 29 |
| FEB | 1 |
| MAR | 27 |
| APR | 0 |
| MAY | 24 |
| JUN | 19 |
| JUL | 7 |
| AUG | 28 |
| SEP | 6 |
| OCT | 3 |
| NOV | 12 |
| DEC | 15 |
| TOTAL | 171 |

| 2014 | RBDs |
|-------|------|
| JAN | 2 |
| FEB | 14 |
| MAR | 12 |
| APR | 32 |
| MAY | 64 |
| JUN | 10 |
| JUL | 12 |
| AUG | 7 |
| SEP | 34 |
| OCT | 10 |
| NOV | 1 |
| DEC | 18 |
| TOTAL | 216 |

| 2015 | RBDs |
|-------|------|
| JAN | 17 |
| FEB | 53 |
| MAR | 18 |
| APR | 28 |
| MAY | 20 |
| JUN | 18 |
| JUL | 28 |
| AUG | 9 |
| SEP | 19 |
| OCT | 12 |
| NOV | 9 |
| DEC | 0 |
| TOTAL | 231 |

| 2016 | RBDs |
|-------|------|
| JAN | 35 |
| FEB | 33 |
| MAR | 40 |
| APR | 36 |
| MAY | 26 |
| JUN | 12 |
| JUL | 14 |
| AUG | 21 |
| SEP | 52 |
| OCT | 25 |
| NOV | 1 |
| DEC | 79 |
| TOTAL | 374 |

| 2017 | RBDs |
|-------|------|
| JAN | 51 |
| FEB | 67 |
| MAR | 107 |
| APR | 8 |
| MAY | 61 |
| JUN | 75 |
| JUL | 17 |
| AUG | 54 |
| SEP | 45 |
| OCT | 47 |
| NOV | 25 |
| DEC | 74 |
| TOTAL | 631 |

| 2018 | RBDs |
|-------|------|
| JAN | 60 |
| FEB | |
| MAR | |
| APR | |
| MAY | |
| JUN | |
| JUL | |
| AUG | |
| SEP | |
| OCT | |
| NOV | |
| DEC | |
| TOTAL | 60 |